

FOUR CLUBS—ONE MEMBERSHIP

EMPIRE PASS - TUHAYE - MAIN STREET - OUTPOST

Gracing a spectacularly scenic swath of the Wasatch Mountains in the central Rockies, Talisker Club is Park City's only four-club private community presenting an incomparable collection of mountain, Main Street, backcountry and country clubs. It's akin to an all-access pass in every season to a remarkable life within nature's wondrous embrace. To belong is to be part of a family of kindred spirits who desire nothing more than savoring the simple pleasures of shared time and building memories with loved ones.



TALISKER CLUB

Welcome Center Open Daily
10105 N. Tuhaye Drive, Kamas, Utah 84036
TaliskerClub.com | 435.333.3617

Moondance

— CRESCENT PLAN —

Mountain style meets refined sophistication. The unique interior, with multiple outdoor spaces and inspired golf course views, provides a relaxed setting to gather with family and friends.



TALISKER CLUB

BERKSHIRE
HATHAWAY
HOMESERVICES
UTAH PROPERTIES

The Talisker Club | Empire Pass | Tuhaye materials and the features, prices and planned amenities are based upon current development plans which are subject to change without notice. These artist renderings are intended to be representative of the "flavor" of a Moondance home. Future Moondance homes may be different, and the Developer has the ability to make field changes and substitutions to any of the Moondance homes. Any and all recreational and golf amenities and facilities will be privately owned and operated as a club with mandatory membership and mandatory membership fees payable. This does not constitute an offer to sell or solicitation of an offer to buy real estate in any jurisdiction where prohibited by law or in any jurisdiction where registration or other legal requirements have not been fulfilled. ©2023 The names and logos are licensed and registered trademarks of Storied Deer Valley, LLC.

©2023 BHH Affiliates, LLC. An independently owned and operated franchisee of BHH Affiliates, LLC. Berkshire Hathaway HomeServices and the Berkshire Hathaway HomeServices symbol are registered service marks of Columbia Insurance Company, a Berkshire Hathaway affiliate. Equal Housing Opportunity. Information not verified or guaranteed. This correspondence is not intended as a solicitation; if your property is currently listed with another brokerage, please discard.

HOMESITE 4

4 bedrooms, 4.5 bathrooms, ~3,421 finished square feet
offered fully furnished at \$4,150,000



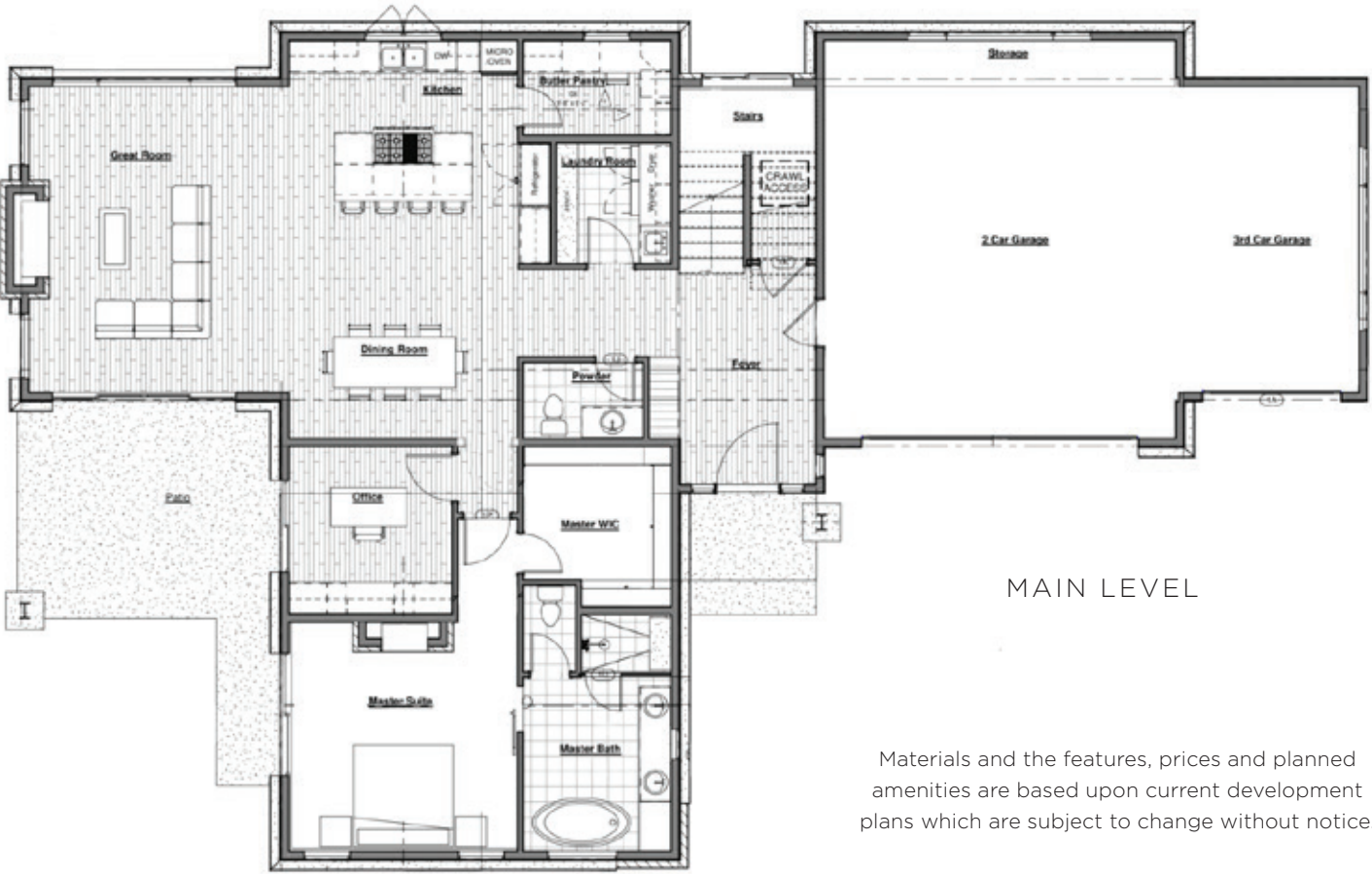
MOONDANCE

Designed by Otto/Walker Architects, Moondance is a limited collection of only 20 mountain contemporary homes centrally located within the Talisker Club – Tuhaye community between the 7th, 8th and 9th holes of the Mark O’Meara Signature Championship golf course.

The 3.4-acre Moondance Park features a playfield, pavilion, firepit, playgrounds, lawn games, and a court for basketball and pickleball in the summer and an icerink in the winter.

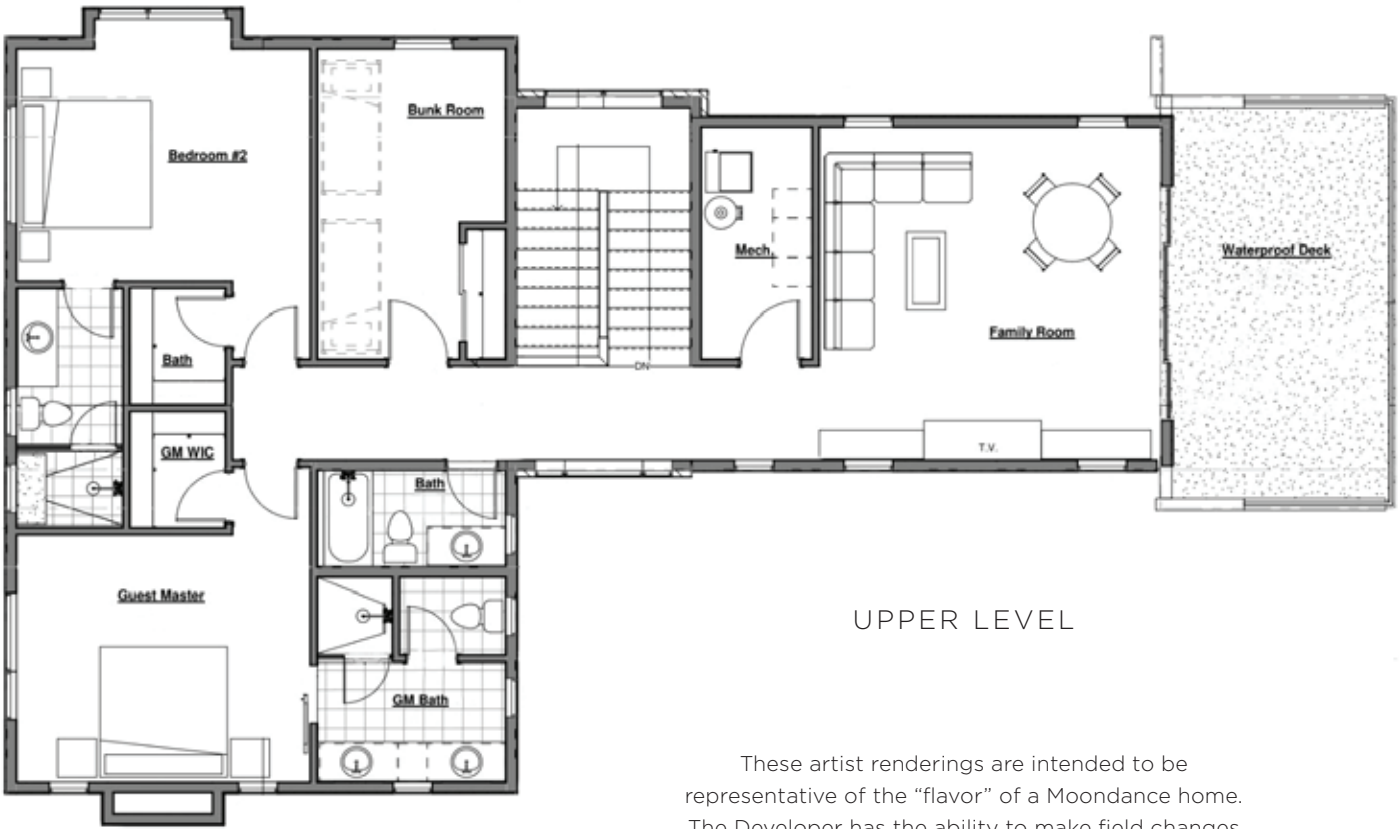


HOMESITE 4 FLOORPLANS



MAIN LEVEL

Materials and the features, prices and planned amenities are based upon current development plans which are subject to change without notice.



UPPER LEVEL

These artist renderings are intended to be representative of the “flavor” of a Moondance home. The Developer has the ability to make field changes and substitutions to any of the Moondance homes.